

Registration Information

Telephone Registration: (602)-787-7000

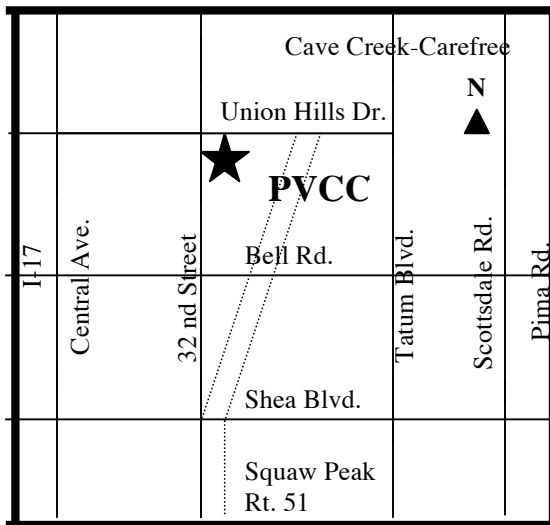
For further information, please contact one of PVCC's Chemistry Faculty:

- Dr. Scott Massey (602) 787-6644
- Dr. Lynn Lalko (602) 787-6640
- Dr. Satinder Bains (602) 787-6586

Or visit PVC's Science's website at:

www2.pvc.maricopa.edu/ms/index.html

DIRECTIONS TO PVCC:



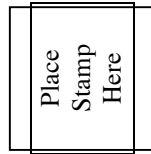
(map not to scale)

The Maricopa County Community College District does not discriminate on the basis of race, color, religion, national origin, sex, sexual orientation, handicap/disability, age, or Vietnam era/disabled veteran status in employment or in the application, admission, participation, access and treatment of persons in instructional programs and activities.

PARADISE VALLEY COMMUNITY COLLEGE

18401 North 32nd Street

Phoenix, Arizona 85032



Pre-Medical Requirements

Start Your Career At

PVCC

Towards Admission To

UNIVERSIDAD AUTONOMA

de GUADALAJARA

College of Medicine



**Recommended Program for
Pre-Medical Professionals!**

**PARADISE VALLEY
COMMUNITY COLLEGE**

18401 North 32nd Street

Phoenix, Arizona 85032

(602) 787-6500

<http://www.pvc.maricopa.edu>



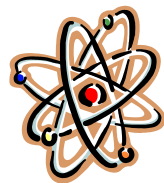
**Universidad Autonoma de Guadalajara
Bilingual Medical Degree enables:**

Work in a Variety of Settings:

- Rural Community
- Hospitals
- Managed Care Organizations
- Educational Institutions
- Private Practice

Medical Specialties:

- Anesthesiology
- Cardiology
- Cardiothoracic Surgery
- Dermatology
- Endocrinology
- Family Medicine
- Gastroenterology
- General Surgery
- Hematology
- Immunology
- Infectious Diseases
- Laboratory Medicine & Pathology
- Nephrology
- Neurology/Neuroscience
- Neurosurgery
- Obstetrics/Gynecology
- Oncology
- Ophthalmology
- Orthopedics
- Otorhinolaryngology
- Pediatrics
- Pediatric Surgery
- Physical Medicine & Rehabilitation
- Plastic Surgery
- Otorhinolaryngology
- Psychiatry
- Public health
- Radiology
- Respiration Medicine
- Rheumatology
- Urology
- Vascular Surgery



This program is designed specifically for transfer to
Universidad Autonoma de Guadalajara's
College of Medicine



Pharmacy



Pediatrics

1st SEMESTER (Fall) TOTAL CREDITS = 16

- ___ENG101 First-Year Composition (3 Cr.)
- ___ENH110 Introduction to Literature (3 Cr.)
- ___BIO181 General Biology I (Majors) (3 Cr.)
- ___CHM151 & 151LL General Chemistry I (4 Cr.)
- ___SPA115 Beginning Spanish Conversation (3Cr.)

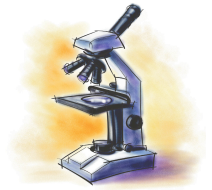
2nd SEMESTER (Spring) TOTAL CREDITS = 17

- ___ENG102 First-Year Composition (3 Cr.)
- ___BIO182 General Biology II (Majors) (4 Cr.)
- ___CHM152 & 152LL General Chemistry II (4 Cr.)
- ___MAT182 Plan Trigonometry (3 Cr.)
- ___SPA116 Beginning Spanish Conv II (3 Cr.)

3rd SEMESTER (Fall) TOTAL CREDITS = 12

- ___HCC145AA Medical Terminology for Health Care Workers I (1 Cr.)
- ___CHM235 & 235LL Organic Chemistry (4 Cr.)
- ___PHY111 General Physics I (4 Cr.)
- ___PHI103 Introduction to Logic (3 Cr.)

*** Students are recommended to meet with an advisor regarding this program.**



4th SEMESTER (Spring) TOTAL CREDITS = 17

- ___CHM236 & 236LL Organic Chemistry II (4 Cr.)
- ___ENG111 Technical Writing-Scientific (3 Cr.)
- ___HUM250/251 Ideas/Values in HUM (3 Cr.)
- ___MAT212 Brief Calculus (3 Cr.)
- ___PHY112 General Physics II (4 Cr.)

5th SEMESTER (Fall) TOTAL CREDITS = 14

- ___BIO201 Human Anatomy/Physiology I (4 Cr.)
- ___BIO241 Human Genetics (4 Cr.)
- ___COM100 Intro. To Communication (3 Cr.)
- ___SOC101 Introduction to Sociology (3 Cr.)

6th SEMESTER (Spring) TOTAL CREDITS = 17

- ___BIO202 Human Anatomy/Physiology II (4 Cr.)
- ___BIO205 Microbiology (4 Cr.)
- ___REL243 Intro to World Religions (3 Cr.)
- ___ECN111 Macroeconomics Principles (3 Cr.)
- ___PSY101 Introduction to Psychology (3 Cr.)

TOTAL CREDITS FOR THE PROGRAM = 93